

## UNITED STATES PUBLIC LAND SURVEY CORNER CERTIFICATE OF

Land Survey Monuments situated in Section 28, Township 107, Range 41 of the Fifth Principal Meridian, MURRAY County, Minnesota.

Previously recorded in NO PREVIOUS RECORDINGS in County Recorder's Office.  
(book, page, document number, etc.)

(Show reason for preparing this certificate, the evidence and detailed procedures used in establishing the corner positions and monumentation found or placed.)

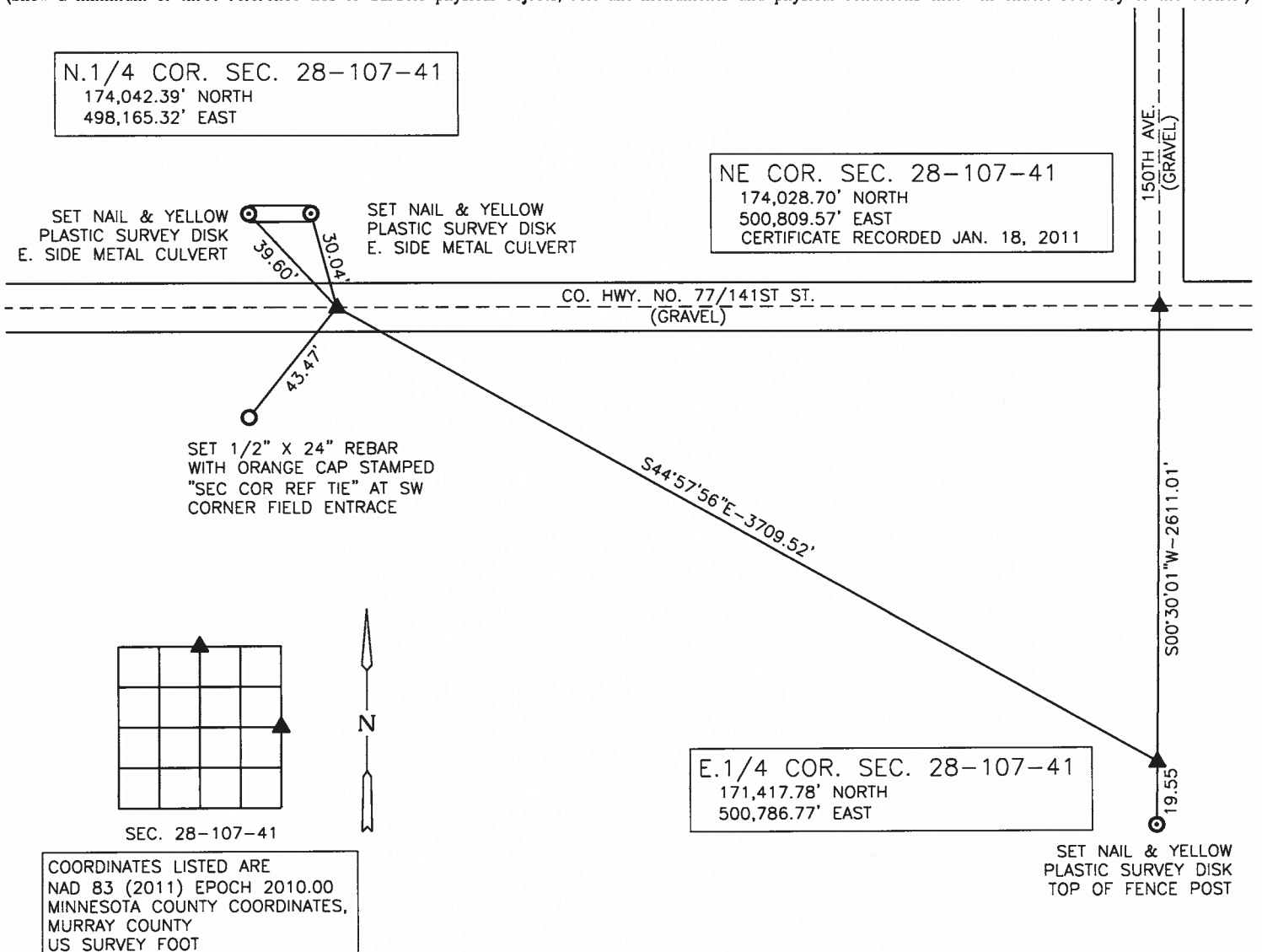
**Monument Description and Remarks:** FOR SURVEY IN THE NE1/4 SECTION 28-107-41

E.1/4 CORNER - NO MONUMENT FOUND. SET 1/2" X 24" REBAR WITH RED SURVEYOR'S I.D. CAP NO. 51727 IN FENCE RUNNING NORTH AND SOUTH AT APPARENT OCCUPATION LINE RUNNING WEST. COUNTY ENGINEER RECORDS STATE "NO INFORMATION"

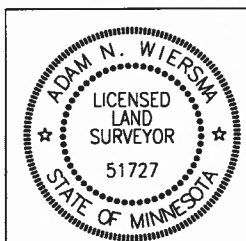
N.1/4 CORNER - NO MONUMENT FOUND. SET 1/2" X 24" REBAR WITH RED SURVEYOR'S I.D. CAP NO. 51727 AT  $\frac{1}{2}$  GRAVEL ROAD, INLINE WITH FENCE REMAINS RUNNING NORTH. COUNTY ENGINEER RECORDS INDICATE A CONC. STONE WAS SET IN 1940.

### PLAN - VIEW

(Show a minimum of three reference ties to durable physical objects, relevant monuments and physical conditions that will enable recovery of the corner.)



ALL DISTANCES SHOWN ARE HORIZONTAL



I hereby certify that this plan, specification, or report was prepared by me or under my direct supervision and that I am a duly Licensed Land Surveyor under the laws of the State of Minnesota.

By: *Adam Wiersma* 12-27-17  
Adam N. Wiersma, L.S. License No. 51727 (Date)

My license renewal date is June 30, 2018  
Sheets covered by this seal: THIS SHEET ONLY

List Corners to be Indexed			
CORNER	SECTION	TWP	RANGE
E.1/4 COR.	28	107	41
N.1/4 COR.	28	107	41